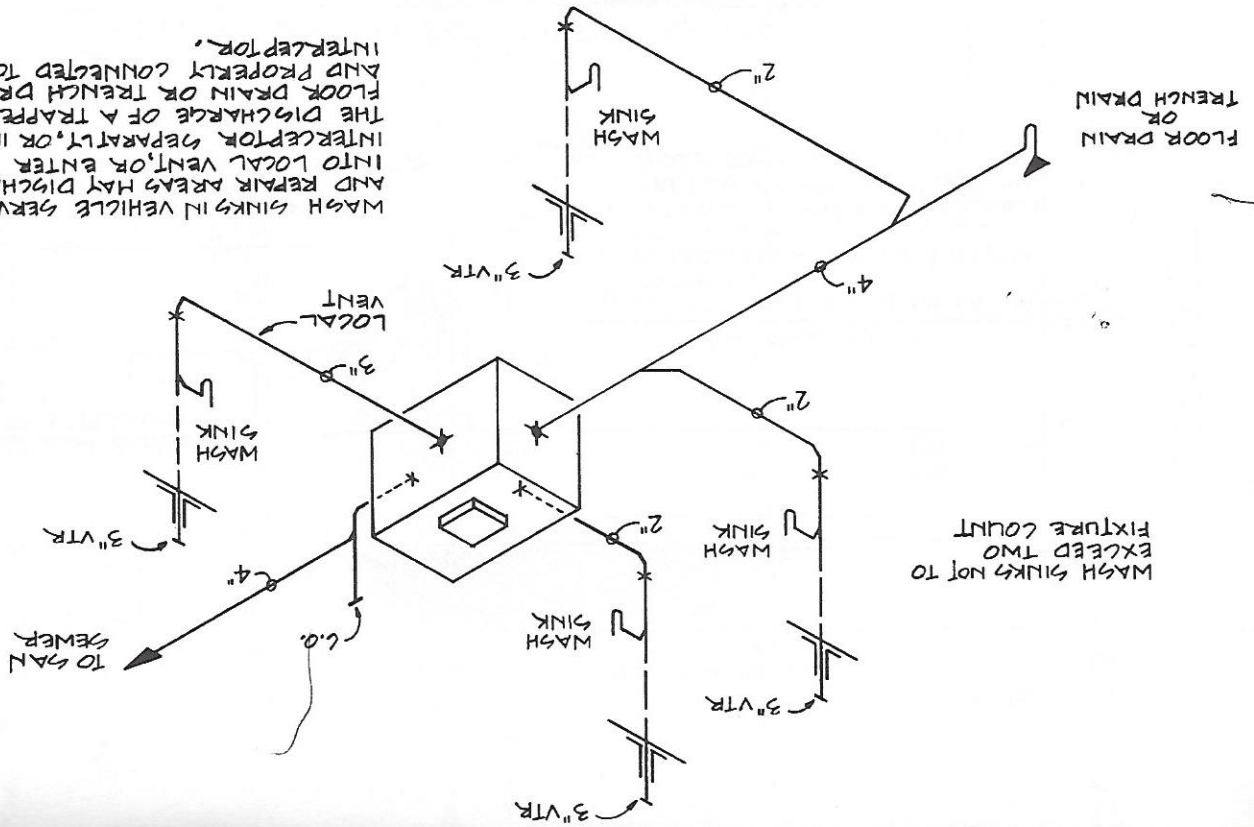
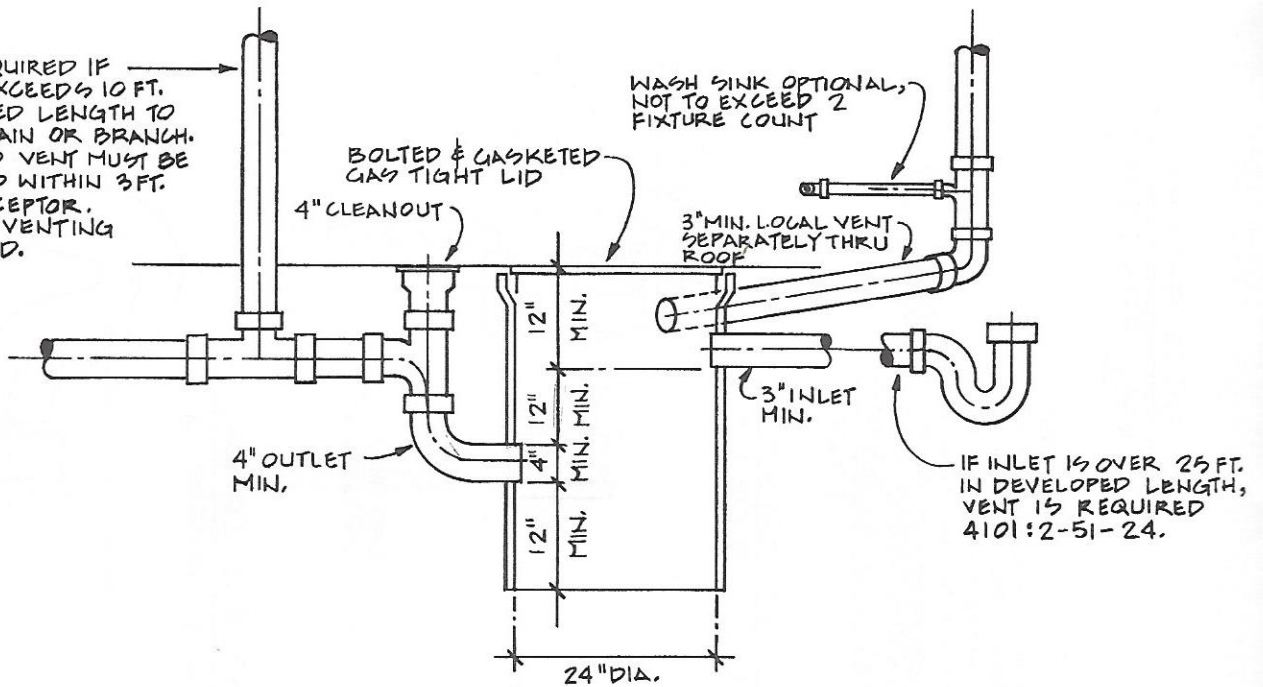


WASH SINKS IN VEHICLE SERVICING AND REPAIR AREAS MAY DISCHARGE INTO LOCAL VENT, OR INTO INTERCEPTOR SEPARATELY, OR INTO FLOOR DRAIN OR TRENCH DRAIN AND PROPERLY CONNECTED TO INTERCEPTOR.



WASH SINKS NOT TO EXCEED TWO FIGURE COUNT

VENT REQUIRED IF OUTLET EXCEEDS 10 FT. DEVELOPED LENGTH TO VENTED MAIN OR BRANCH. REQUIRED VENT MUST BE INSTALLED WITHIN 3 FT. OF INTERCEPTOR. REDUCED VENTING PERMITTED.



WASH SINK OPTIONAL, NOT TO EXCEED 2 FIGURE COUNT

BOLTED & GASKETED GAS TIGHT LID

3" MIN. LOCAL VENT SEPARATELY THRU ROOF

4" OUTLET MIN.

3" INLET MIN.

IF INLET IS OVER 25 FT. IN DEVELOPED LENGTH, VENT IS REQUIRED 4101:2-51-24.

MINIMUM GARAGE INTERCEPTOR

(INDUSTRIAL)

4101:2-51-24 (OAC)